



The  
Harbourview



# GREEN REPORT 2024

**THE ECO-FRIENDLY WAY  
WE SERVE**

# CONTENTS

<b>01</b>	<b>Introduction</b>	
	About This Report	P.2
	Message from the General Manager	P.3-4
	About the Harbourview	P.5-7
	Goals and Plans	P.8-9
<b>02</b>	<b>Environmental Performance</b>	
	Environment Performance	P.10-11
	Energy Consumption	P.12-18
	Gas Consumption	P.19-21
	Greenhouse Gas Emissions	P.22-27
	Water Consumption	P.28-30
	Waste Management	P.31-34
<b>03</b>	<b>Environmental Awareness</b>	
	Employee Engagement	P.36
	Guest Participation	P.37-38
<b>04</b>	<b>Environmental and Social Responsibility</b>	
	Partnership Excellence	P.39
	Dissemination of Environmental Information	P.40-41
	Environmental Charters, Certification, and Awards	P.42-44
<b>05</b>	<b>Prospect</b>	
	Our Visions	P.45
	Acknowledgments	P.46
<b>06</b>	<b>Reference</b>	P.47

# ABOUT THIS REPORT

The Harbourview regards environmental responsibility as a core value. In response to growing global climate challenges, we have strengthened our sustainability strategy in 2024, aligning with “Hong Kong’s Climate Action Plan 2050” to reduce our carbon footprint through systematic environmental initiatives.

We integrate eco-consciousness into our services, offering guests a comfortable and sustainable experience while encouraging public participation in low-carbon practices.

Since our first Green Report in 2015, we have maintained transparency in reporting our environmental performance and progress.

This year’s report focuses on energy transition and our achievements in sustainable development.

## **Eco-Hospitality**

Discover our environmental initiatives and achievements at: <https://theharbourview.com.hk/tc/green>

## **Your Feedback**

We welcome your valuable suggestions to help us improve. Please contact us at:  
[info@theharbourview.com.hk](mailto:info@theharbourview.com.hk)

# MESSAGE FROM THE GENERAL MANAGER

At The Harbourview, we're pioneering a new era of sustainable hospitality. Building on our heritage as part of The Chinese YMCA of Hong Kong family, we have elevated our environmental initiatives from corporate responsibility to the driving force behind our business transformation. With 'Green Living' as our guiding principle, we've woven environmental practices into the very fabric of our hotel management and operational framework.



The Harbourview seizes development opportunities with innovative thinking. We have not only upgraded our environmental facilities comprehensively but also enhanced environmental awareness among employees, suppliers, and guests through systematic training. We believe that true green transformation requires the participation of all stakeholders; therefore, we have specially designed a series of interactive environmental activities to naturally incorporate sustainability concepts into every guest's stay.

# MESSAGE FROM THE GENERAL MANAGER

Drawing inspiration from and exceeding the benchmarks set by the Hong Kong SAR Government's "Energy Saving Plan for Hong Kong's Built Environment 2015–2025+" and the "the 4Ts Charter". The Harbourview established clear energy and water reduction targets in 2015. Having surpassed our initial five-year target of 5% reduction (2016-2020), we challenged ourselves further and achieved an ambitious 8% reduction by 2023. This success has inspired us to set even more aggressive sustainability targets for the coming years.

A cornerstone of our energy efficiency achievements has been our intelligent Building Management System (BMS), which provides comprehensive real-time monitoring and precise control of our air-conditioning systems, significantly lowering electricity use.

Regarding equipment efficiency, we installed an innovative rooftop wind turbine in 2022 to power our oil-free magnetic levitation chillers, reducing both energy consumption and carbon emissions while delivering economic benefits. In 2024, we enhanced our green initiatives by introducing smart umbrella drying stations and plastic bottle recycling bins, formally integrating plastic reduction into our sustainability framework. Through rigorous waste segregation and resource recycling, we are committed to progressively minimizing single-use plastics.

# MESSAGE FROM THE GENERAL MANAGER

As a responsible corporate citizen, The Harbourview fosters environmental awareness through regular employee training and community outreach. Our efforts have been recognized with the Hong Kong Environmental Excellence Award (Merit) and three honors at the 2023 BOC Hong Kong Corporate Low Carbon Environmental Leadership Awards, affirming our commitment to continuous improvement.

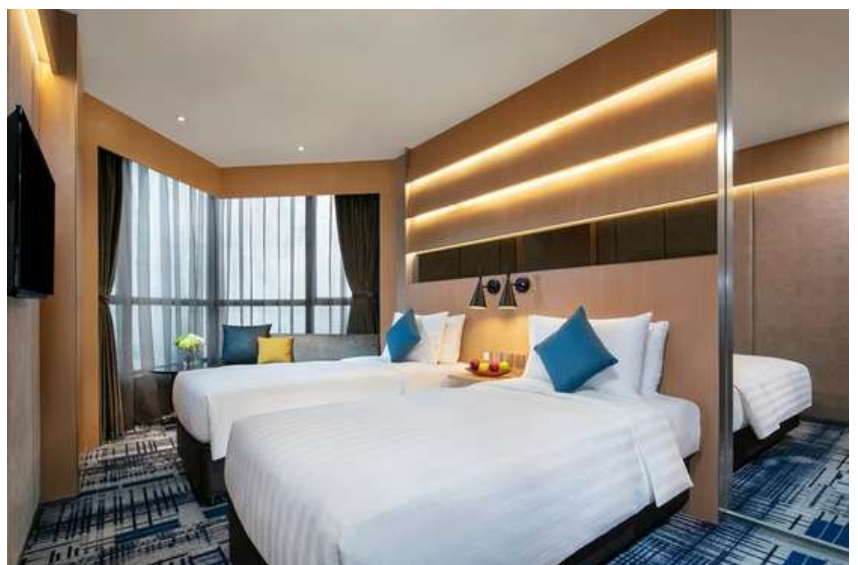
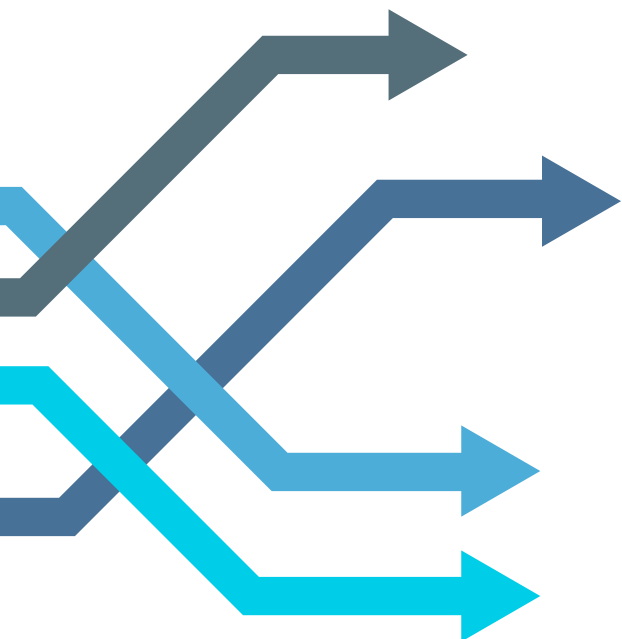
The Harbourview is actively accelerating our carbon reduction initiatives, pushing beyond the goals outlined in Hong Kong's Climate Action Plan 2050. Our comprehensive carbon neutrality strategy encompasses innovative solutions across operations, guest experiences, and community engagement, and fostering innovation to balance excellent service with environmental stewardship. We are committed to working with all stakeholders to build a greener, sustainable future.



# ABOUT THE HARBOURVIEW

The Harbourview features 320 guest rooms, two dining venues, and well-equipped meeting and event facilities. The hotel's stylish furnishings and intelligent amenities complement each other, offering guests panoramic views of Victoria Harbour's skyline or the city's vibrant neon lights through floor-to-ceiling windows. In addition to high-speed internet and thoughtfully designed workspaces, guests can savor exquisite international cuisine. Situated in the heart of the Convention and Exhibition District, the hotel elegantly caters to both business and leisure travelers.

We aim to offer comprehensive accommodation and dining options, as well as meeting and event services for visitors from all over the world. We are committed to providing our guests with an unforgettable experience that exceeds their expectations.

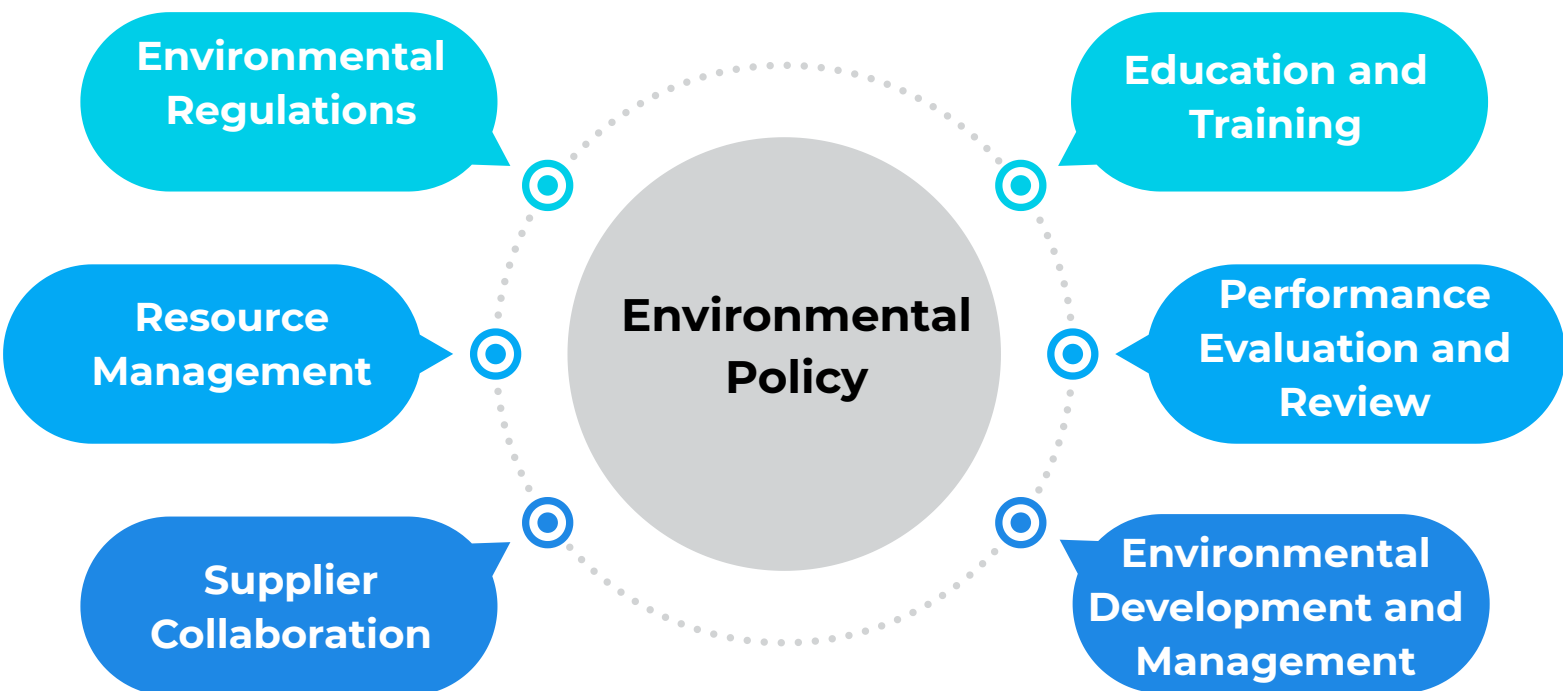


# ABOUT THE HARBOURVIEW – GREEN MANAGEMENT STRATEGY AND POLICIES

The Harbourview has always upheld its environmental mission, committed to serving guests with a green philosophy. Since 2015, in collaboration with The Education University of Hong Kong, we have developed and implemented six green policies to optimize the hotel's environmental management practices. These policies have significantly enhanced the hotel's environmental performance and effectively reduced its carbon footprint.

## **The environmental policies included 6 dimensions:**

1. Legislation
2. Resources Management
3. Environmental Development and Management
4. Industry Cooperation
5. Performance Evaluation
6. Education and Training

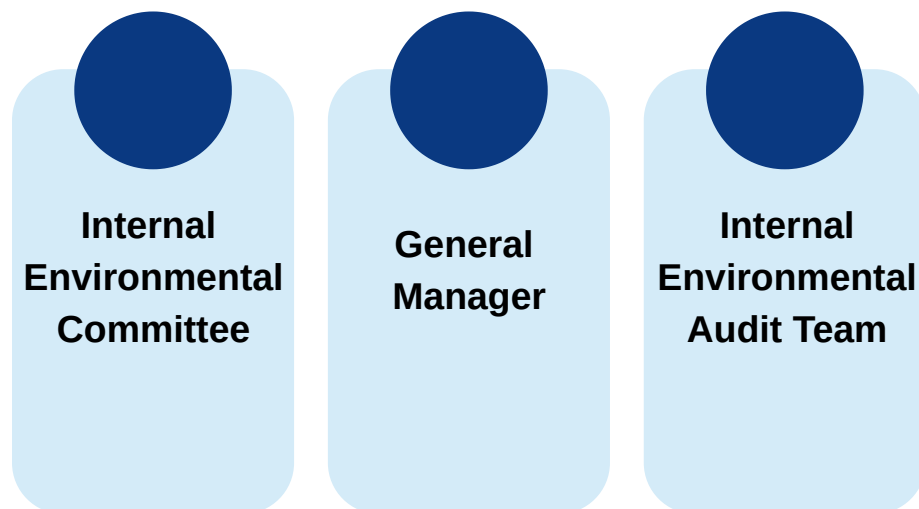




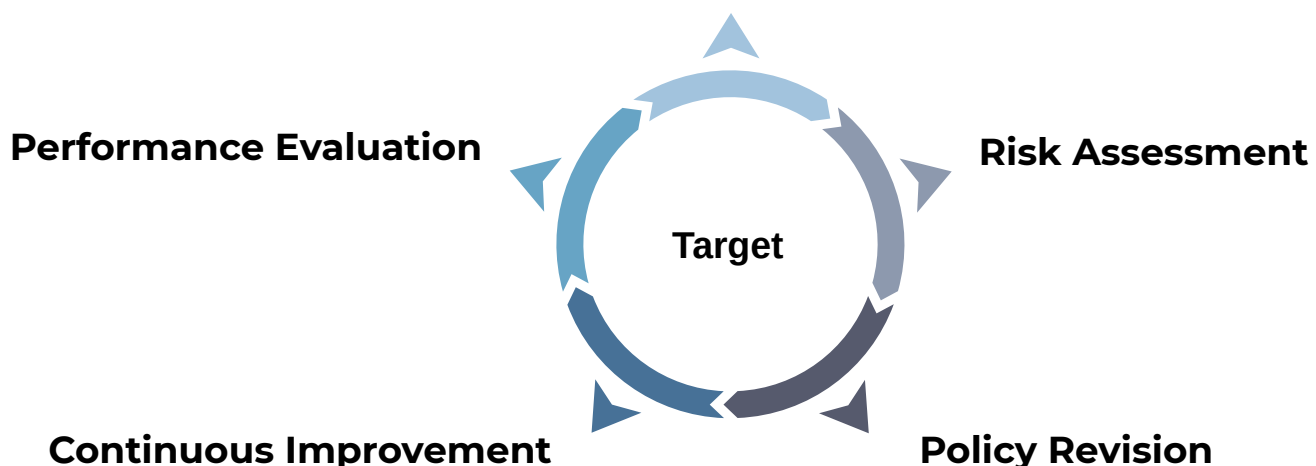
# ABOUT THE HARBOURVIEW – GREEN MANAGEMENT STRATEGY AND SYSTEM

The Harbourview collaborates closely with EDUHK to continually improve its six key environmental policies. Under the General Manager's leadership, an Internal Environmental Committee was established in March 2015 to oversee policy implementation.

The committee develops environmental frameworks, sets targets, and provides expert management advice to ensure sustainability is embedded in operations. In September 2015, an Internal Environmental Audit Team was formed to monitor performance, optimize measures, and enhance green initiatives.



## Policy Implementation



# GOALS AND PLANS

The Harbourview is dedicated to reducing its environmental impact in line with Hong Kong's Energy Saving Plan 2015–2025+ and the 4Ts Charter. The hotel has set six core environmental targets to support Hong Kong's emission reduction goals, aiming for gradual carbon and carbon intensity reductions and committing to at least a 1% annual decrease in greenhouse gas emissions.

From 2016 to 2023, the hotel achieved an 8% reduction in energy and water consumption, reflecting its strong commitment to sustainability. In response to the Hong Kong Climate Action Plan 2050 and the 2024 Product Environmental Responsibility (Amendment) Ordinance, “plastic reduction” has been added as a new core target.

Starting in 2024, the hotel will intensify efforts to reduce plastic use and improve recycling, further reinforcing its environmental commitments and promoting green operations.

# GOALS AND PLANS

## **Waste Reduction and Recycling:**

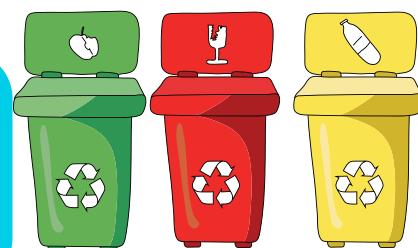
Implement effective waste management to promote recycling and reduce single-use products.

## **Waste Management Optimization:**

Encourage food waste composting and use of biodegradable packaging to lessen plastic waste.

## **Greenhouse Gas Reduction:**

Promote low-carbon travel and use renewable energy to lower carbon emissions.



## **Energy Efficiency:**

Regularly review operations and adopt energy-efficient equipment to reduce consumption.

## **Environmental Awareness:**

Provide training and campaigns to engage employees and guests in sustainability.

## **Pollution Minimization:**

Limit chemical use and apply sustainable cleaning to reduce environmental impact.

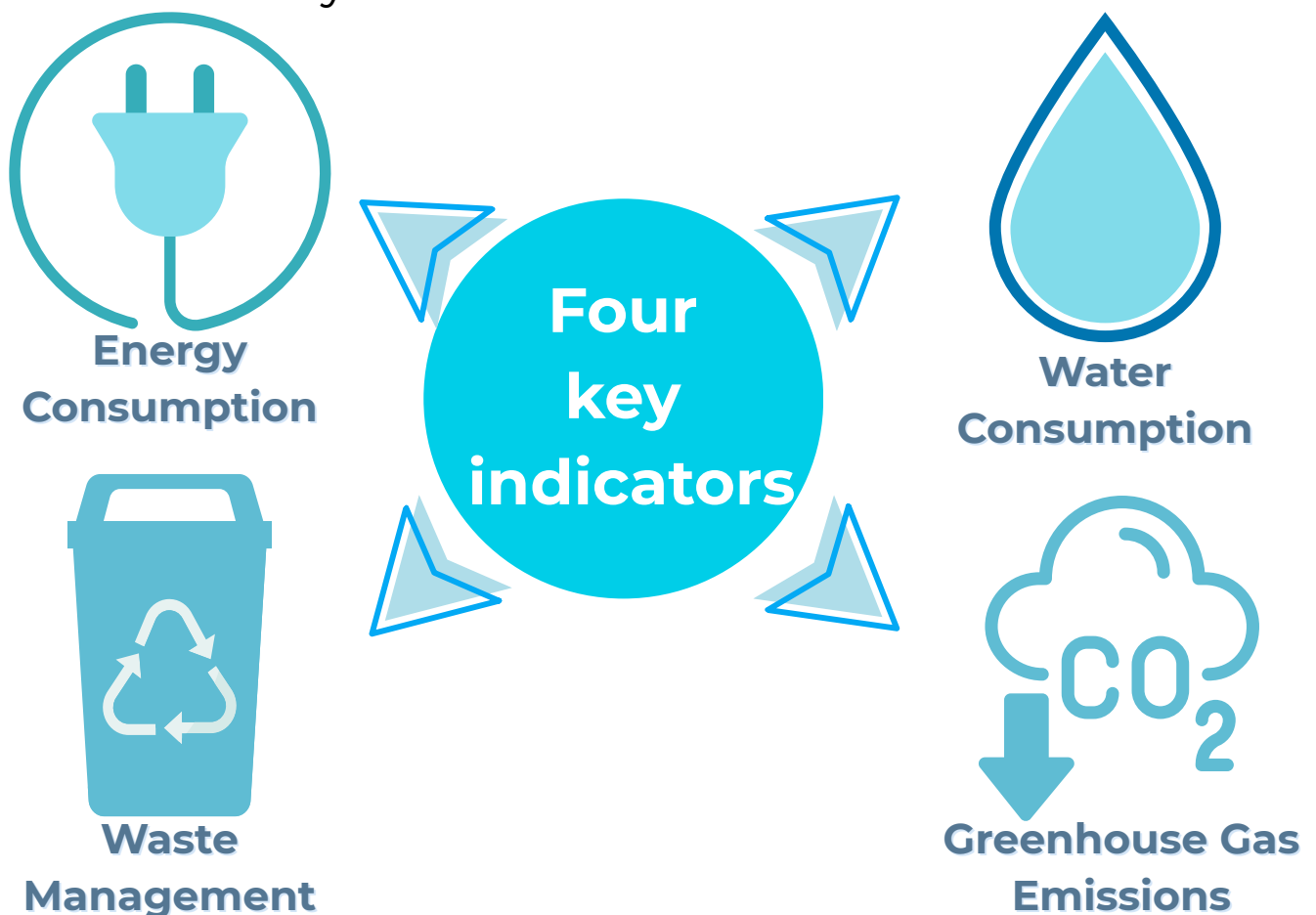




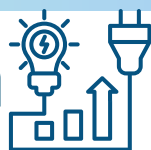
# **ENVIRONMENTAL PERFORMANCE**

# ENVIRONMENTAL PERFORMANCE

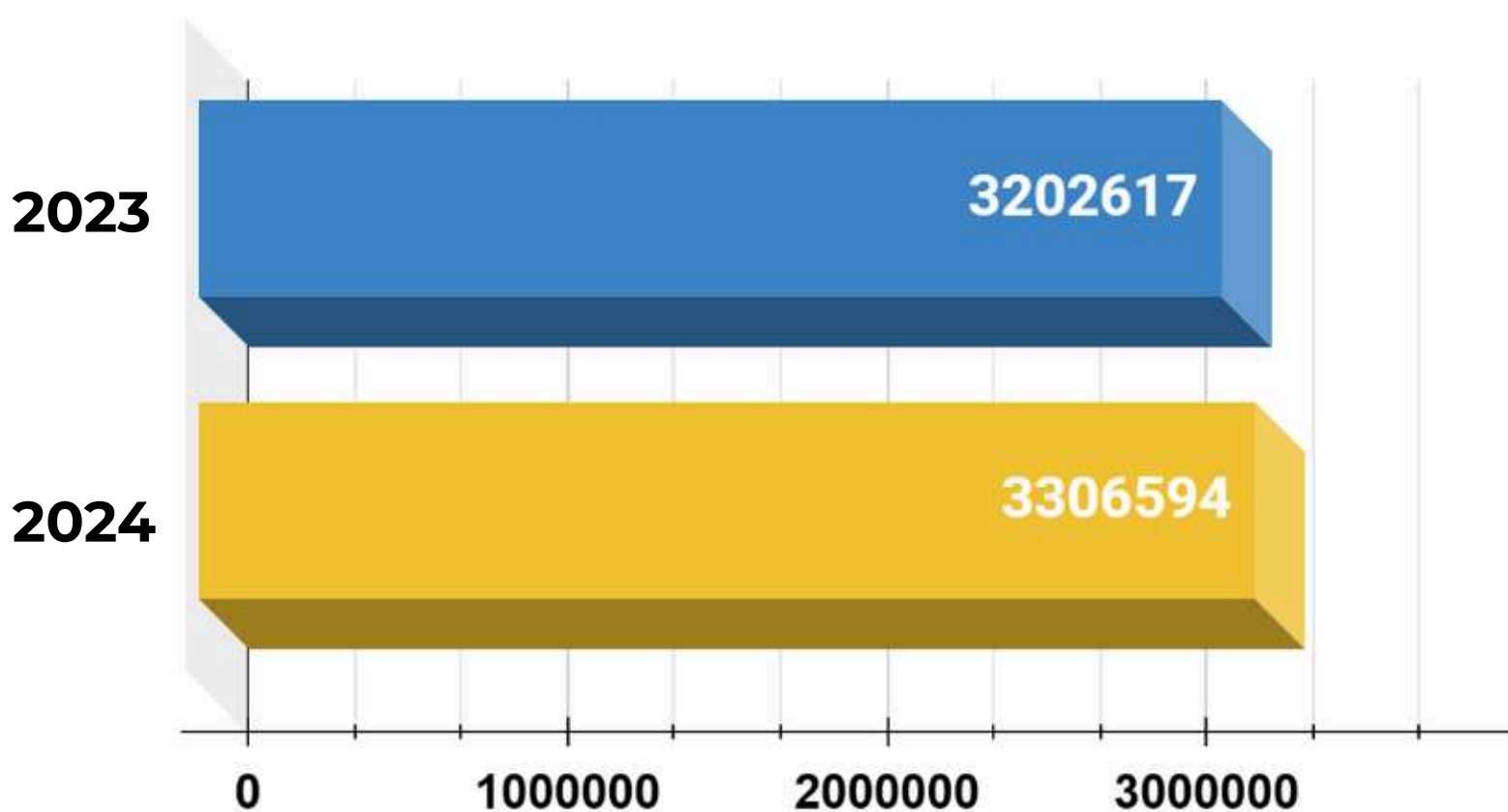
The Harhourview prioritizes environmental protection as a core development strategy and systematically drives its green transformation. By comprehensively upgrading energy-efficient equipment and implementing intelligent energy monitoring systems, the hotel significantly enhances energy utilization efficiency, achieving a year-on-year reduction in carbon emissions. Additionally, regular environmental training programs are conducted to deepen employees' awareness of environmental stewardship. To ensure transparency in its environmental commitments, the hotel publishes an annual Green Development Report that quantitatively evaluates sustainability performance based on four key indicators.



# Energy Consumption



In 2024, our total electricity consumption increased from 3,202,617 kWh in 2023 to 3,306,594 kWh. This 3.25% rise is attributed to higher occupancy rates and increased restaurant patronage.





# ENERGY CONSUMPTION – ENERGY SAVING MEASURES



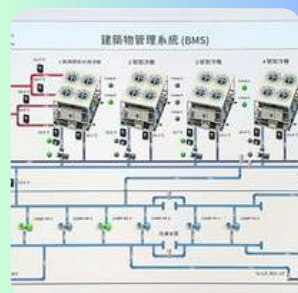
**2018 Light-emitting Diode (LED) Light**



**2014 Solar Panel**



**2019 Heat Insulation Paint**



**2021 Building Management System(BMS)**



**2022 Install a Wind Turbine on the Rooftop**



**2016年&2022 Replacement of double-glazed windows**

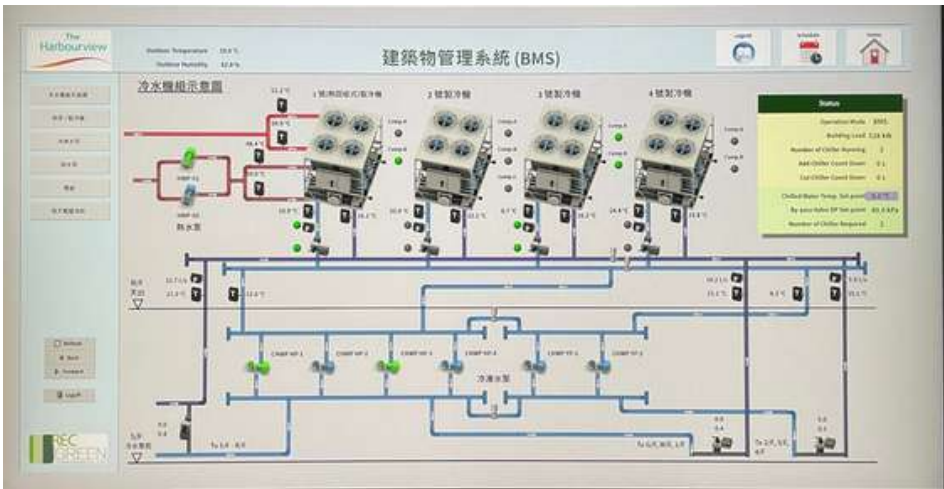


**2023 Harbour Restaurant Window Film**

# ENERGY CONSUMPTION – ENERGY SAVING MEASURES



The Harbourview implemented an AI-based Building Management System (BMS) in November 2021 to monitor and calculate the operational status of the building’s electrical equipment. The system is designed to maintain a comfortable and safe environment within the hotel while achieving efficient energy savings. To evaluate the energy-saving performance of the BMS, we compare the electricity consumption data recorded by the system for the third quarter (July to September) of 2023 and 2024.



	Total number of rooms	Power consumption (KwU)	Average power consumption (unit)		Total number of rooms	Power consumption (KwU)	Average power consumption (unit)
2023 July	9903	296,786.58	29.97	2024 July	9,846	298,688.18	30.34
2023 August	9920	292,002.85	29.44	2024 August	9,912	303,275.98	30.60
2023 September	9411	259,460.51	27.57	2024 September	9,343	294,053.15	31.47

# ENERGY CONSUMPTION – ENERGY SAVING MEASURES AIR-COOLED OIL-FREE CHILLER

Since June 2021, The Harbourview has replaced traditional screw chillers with advanced oil-free magnetic levitation air-cooled chillers. These chillers use magnetic bearings to eliminate friction and lubrication, improving efficiency and reducing maintenance costs.

Equipped with DC variable frequency controls, the system adjusts compressor speed based on cooling demand for energy-efficient operation. The air-cooled condenser with evaporative cooling lowers condensing temperatures, extending free cooling periods and enhancing efficiency.

The oil-free design prevents contamination and improves system stability. An intelligent monitoring system optimizes performance under varying conditions to maximize energy savings.



# ENERGY CONSERVATION INITIATIVE: "COOL KITCHEN" PROGRAM

The Harbourview Hotel's "Cool Kitchen" initiative, launched in 2021, modernizes kitchen operations by upgrading ventilation, switching to induction cooktops, and optimizing cooling systems. By replacing open-flame stoves and enhancing fume extraction, it reduces heat, fumes, and harmful emissions—improving air quality and staff comfort. The energy-efficient design also cuts cooling and ventilation costs, supporting sustainability. This transformation creates a safer, cooler, and more eco-friendly workspace while maintaining high kitchen performance.





# ENERGY EFFICIENCY INITIATIVE: SMART CLIMATE CONTROL SYSTEM

The Harbourview actively adopts advanced air conditioning control panels and air purifier systems to enhance energy efficiency and indoor air quality. Through intelligent AC control panels, the hotel monitors real-time temperature and humidity levels in guest rooms, lobbies, restaurants, and corridors, automatically adjusting cooling operations based on actual demand to prevent energy waste. These panels integrate with the Building Management System (BMS) to enable automated control and optimization of HVAC systems, maintaining comfortable conditions across all areas while minimizing energy consumption.

Additionally, the hotel has installed air purifiers in public areas such as hallways to continuously improve air quality by filtering particulate matter and harmful gases, creating healthier spaces for guests and staff. The purifiers work in tandem with air quality sensors to monitor conditions in real-time and coordinate with ventilation systems to automatically adjust airflow intensity based on air quality readings, further enhancing energy-saving performance.



# ENERGY CONSUMPTION: GREEN WALL

The Harbourview has installed vertical green walls on both the rooftop and ground floor lobby, introducing vibrant greenery into Wan Chai's bustling urban landscape while enhancing aesthetic appeal. These living walls deliver multiple environmental benefits by effectively absorbing harmful air pollutants such as formaldehyde, carbon monoxide, and volatile organic compounds, serving as natural air filtration systems that significantly improve indoor and surrounding air quality. Microorganisms within the plant root systems further break down contaminants, enhancing the air purification process.

Additionally, the green walls utilize plant transpiration to release moisture vapor, helping regulate indoor humidity levels and preventing excessive dryness. This natural humidification increases comfort for both guests and staff while reducing respiratory irritations. The vegetation also absorbs and dissipates heat effectively, mitigating urban heat island effects and improving the microclimate by lowering ambient temperatures, thereby enhancing overall environmental quality.



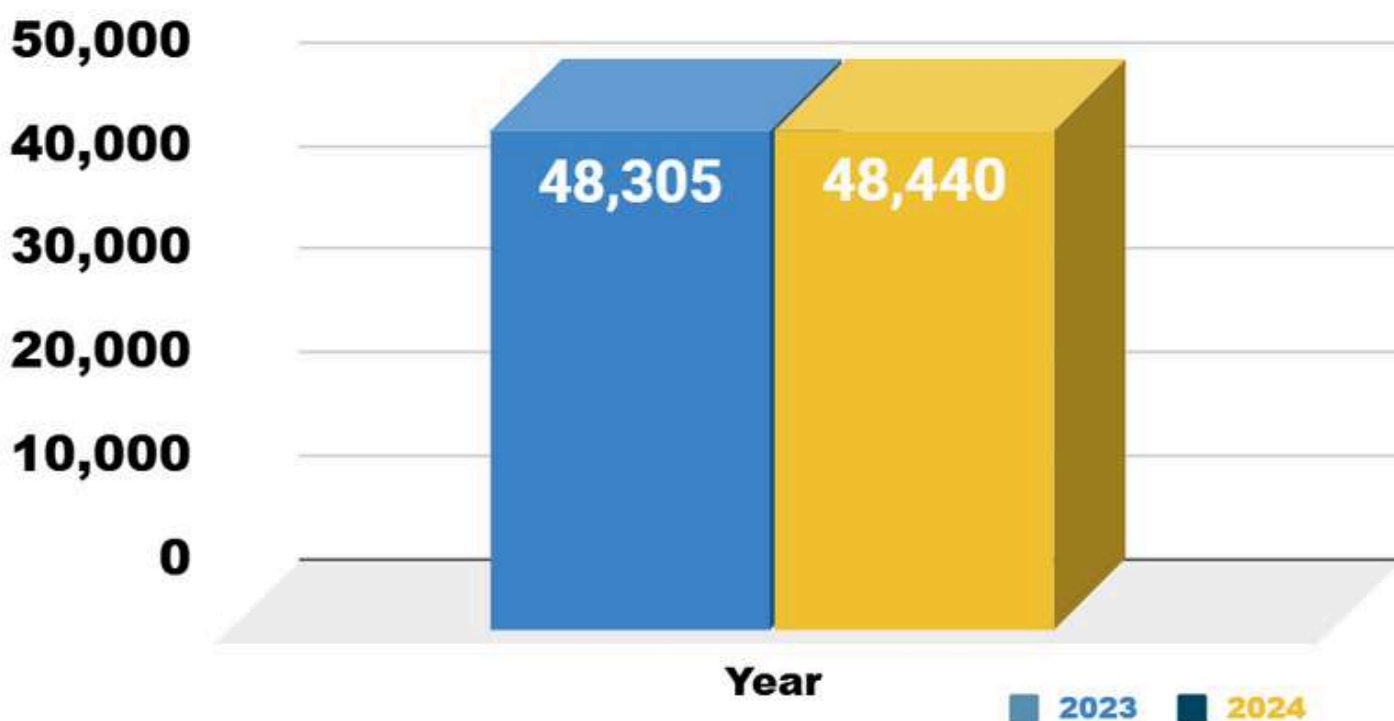


# ENERGY CONSUMPTION:GAS



The Harbourview operations currently maintain necessary reliance on natural gas, particularly for rooftop boiler systems and kitchen equipment. In 2024, total gas consumption reached 48,440 units, reflecting a marginal 0.28% increase (135 units) from the 2023 baseline of 48,305 units. This nominal growth corresponds with heightened hospitality demand during Hong Kong's tourism sector recovery period.

## Comparison of gas consumption in 2023-2024



# ENERGY SAVING MEASURES - HEAT RECOVERY SYSTEM」



Since 2016, Harbour View International Hotel has installed a 120-ton multi-functional heat pump chiller on its roof and equipped heat recovery dishwashers in the restaurant kitchens. These devices can effectively collect the waste heat generated during operation and reuse it for water heating, thus significantly reducing gas consumption.

The heat recovery system maintains a stable water supply temperature by recycling waste heat, reducing the need for additional energy and improving energy efficiency. This not only lowers the hotel's gas consumption but also reduces carbon emissions, enhancing overall environmental benefits.



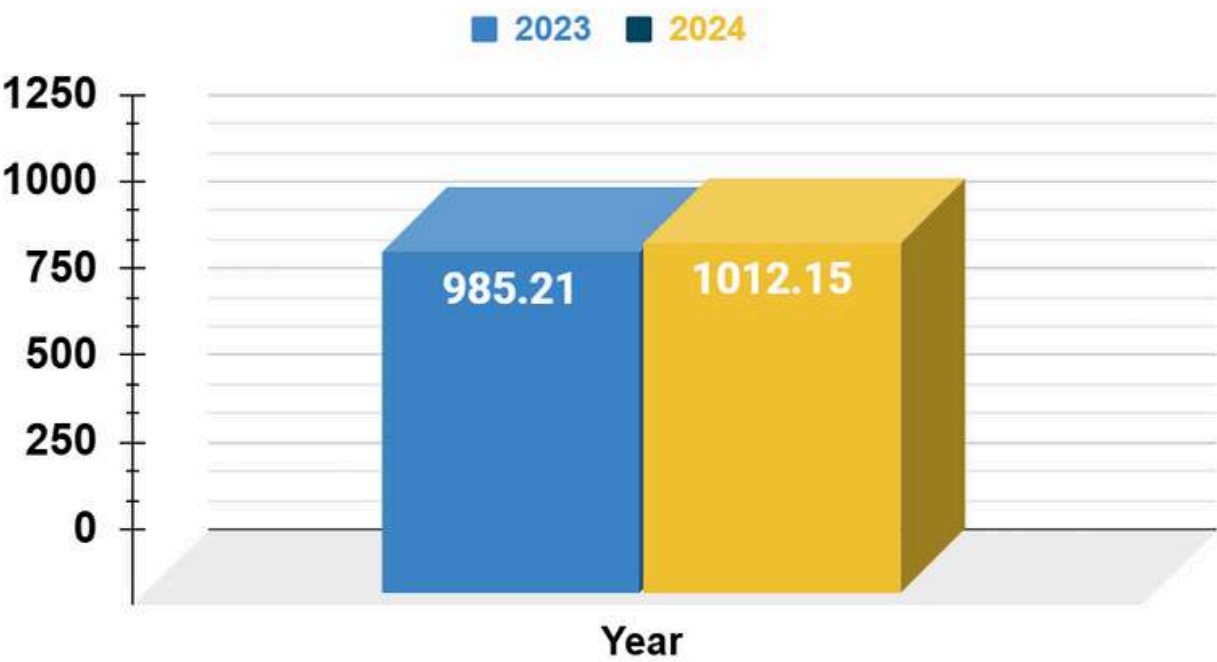
# ENERGY CONSUMPTION: ENERGY UTILIZATION INDEX



The energy consumption indicators established by the Electrical and Mechanical Services Department serve as critical metrics for evaluating energy performance across various operational entities and building types, including residential, commercial, and transportation systems. These standardized benchmarks enable organizations to accurately monitor energy usage patterns while facilitating meaningful cross-industry comparisons of energy conservation achievements.

The Energy Utilization Index (EUI), calculated as [Annual Energy Consumption / Gross Floor Area]:

## Energy Consumption Benchmark (ECB) Overview

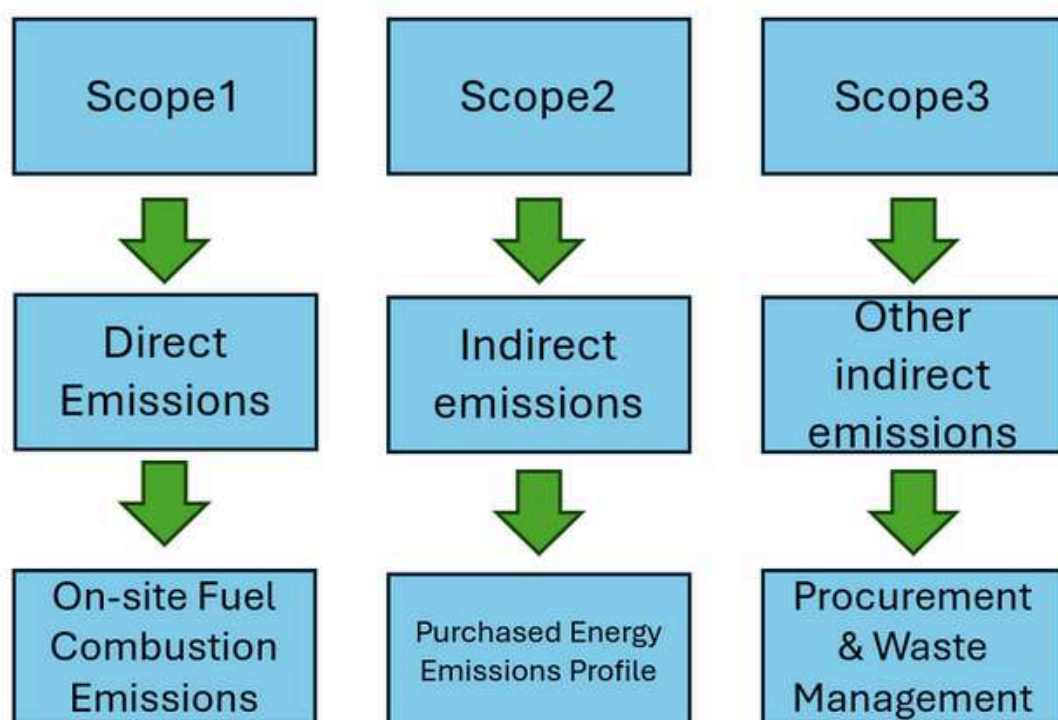


In 2024, The Harbourview energy consumption intensity reached 1,012.15 joules per square meter, reflecting a modest 2.73% increase from the 2023 baseline of 985.21 J/m<sup>2</sup>. Notably, this performance remains 43.5% lower than the hospitality industry average of 1,793 J/m<sup>2</sup>. The measured growth aligns with Hong Kong's economic recovery and rebounding visitor numbers, demonstrating our ability to maintain energy efficiency at par with previous years despite increased operational demands. Moving forward, we will enhance implementation of targeted conservation measures to sustain our industry-leading low-energy performance through continuous operational optimization.

# GHG EMISSION

Recognizing greenhouse gas reduction as a global priority, The Harbourview has established ambitious emission reduction targets using 2015 as our baseline year, with biennial 1% reduction objectives. To achieve these goals, we are implementing a comprehensive decarbonization strategy featuring intelligent energy management systems, supply chain carbon footprint optimization, and low-carbon service transformation. Our annual carbon audit program conducts full-spectrum assessments of building emissions, enabling continuous improvement through data-driven environmental solutions.

In alignment with Hong Kong's official "Guidelines on Greenhouse Gas Emissions and Removals Calculation and Reporting for Buildings (Commercial, Residential or Institutional Purposes)" (2010 Edition) jointly issued by the Electrical and Mechanical Services Department and Environmental Protection Department, greenhouse gas emissions are categorized under three operational boundaries:



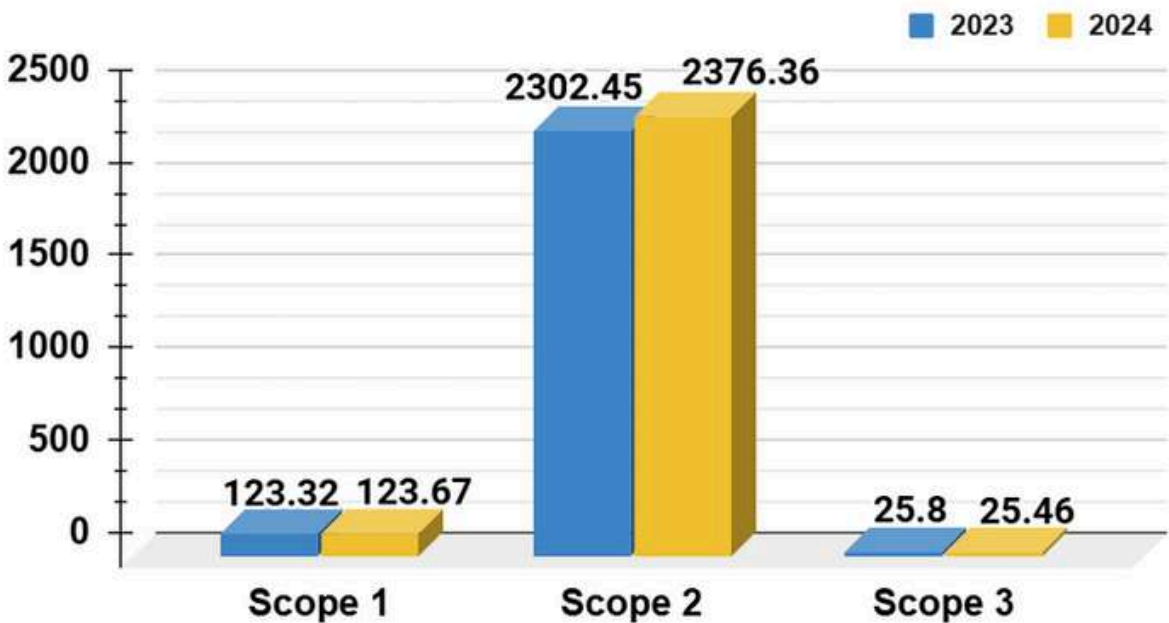
# GHG EMISSION

Breakdown of Greenhouse Gas Emissions by Scope (in tonnes CO2-e):

	Scope 1	Scope 2	Scope 3
2023	123.32	2302.45	25.80
2024	123.67	2376.36	25.46
%Change	+0.28%	+3.21%	-1.32%

Through our annual carbon audit program, The Harbourview maintains rigorous measurement and evaluation of all greenhouse gas emissions across operational categories. The latest data indicates significant growth in Scope 2 energy-related emissions, reflecting the hospitality industry's full post-pandemic recovery. For comprehensive data analysis and detailed breakdowns of these energy consumption patterns, please refer to the "Energy Consumption" section of this sustainability report.

Carbon emissions in 2023 and 2024

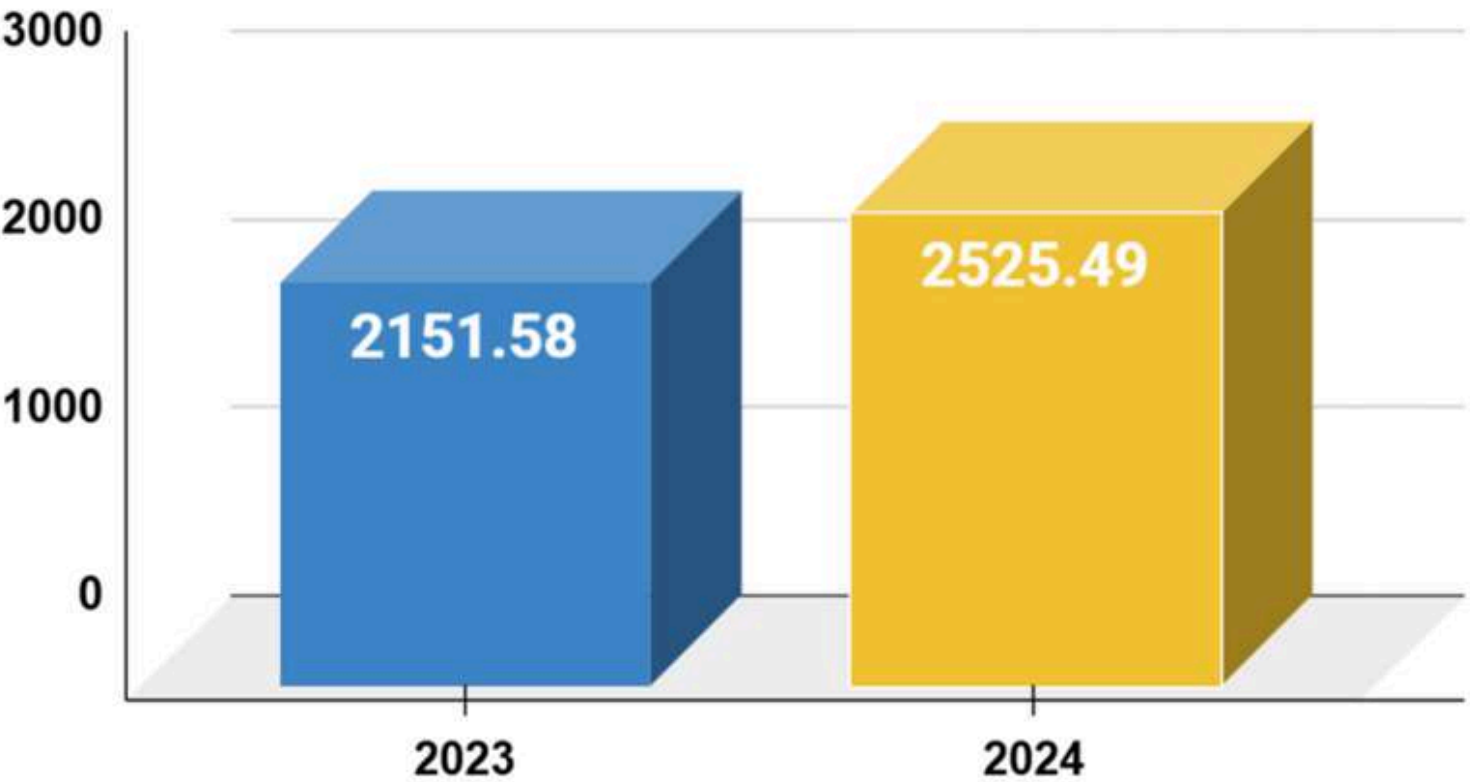


# GHG EMISSION



In 2024, The Harbourview's total greenhouse gas emissions reached approximately 2,525.49 tonnes CO<sub>2</sub>-e, representing a 17.38% increase compared to the 2021 level of 2,151.58 tonnes CO<sub>2</sub>-e. This upward trend reflects the operational scaling required to accommodate post-pandemic industry recovery, while underscoring the urgent need for enhanced decarbonization measures to align with our science-based emissions reduction targets.

**Comparative Analysis of Greenhouse Gas Emissions (2023-2024)**





# GHG EMISSION

Dedicated to environmental leadership, The Harbourview consistently develops and implements comprehensive energy conservation policies to actively reduce greenhouse gas emissions and minimize our ecological footprint. Through regular review and optimization of our energy efficiency programs, we ensure continuous improvement in environmental performance while advancing toward a more sustainable future. Over the years, we have successfully executed numerous impactful energy-saving initiatives, including:

## 2017

- Installation of a heat recovery dishwasher

## 2018

- Installation of oil-free water cooler
- Installation of Keenan dishwasher
- Replacement of 18th and 19th floor guest room windows with double glazing
- Replacement of 40 fan coils
- Replacement of non-essential lights with LED sensors

## 2016

- Installation of heat pump chiller
- Replacement of 20-21st floors guest room windows with double-glazed windows
- Replacement of 40 fan coils

## 2019

- Apply thermal barrier coating on the rooftop flooring
- Replacement of 100 fan coils
- Renovation of 3rd and 4th floor toilets

# GHG EMISSION



## 2020

- Replacement of 14th to 17th-floor guest room windows with double-glazed windows
- Replace 100 fan coils
- Conduct energy audits
- Conduct a re-comparison

## 2022

- Application for Indoor Air Quality Certification Scheme
- Replacement of non-LED lights in car parks
- Installation of small wind turbines on rooftops

## 2021

- Installation of Oil-free Water Chiller
- Installation of Building Management System
- Planning energy optimisation solutions
- Converting the kitchen in the Harbour Restaurant into a "Cool Kitchen"

# GHG EMISSION



## 2023

- Installation of chilled water pump
- Window film for Harbour Restaurant
- Replacement of all bathroom product packaging with biodegradable materials

## 2025

- Implementation of Ambient Light Sensors in Public Areas
- Sustainable Local Sourcing Initiative
- Digital Back-of-House Monitoring System Implementation

## 2024

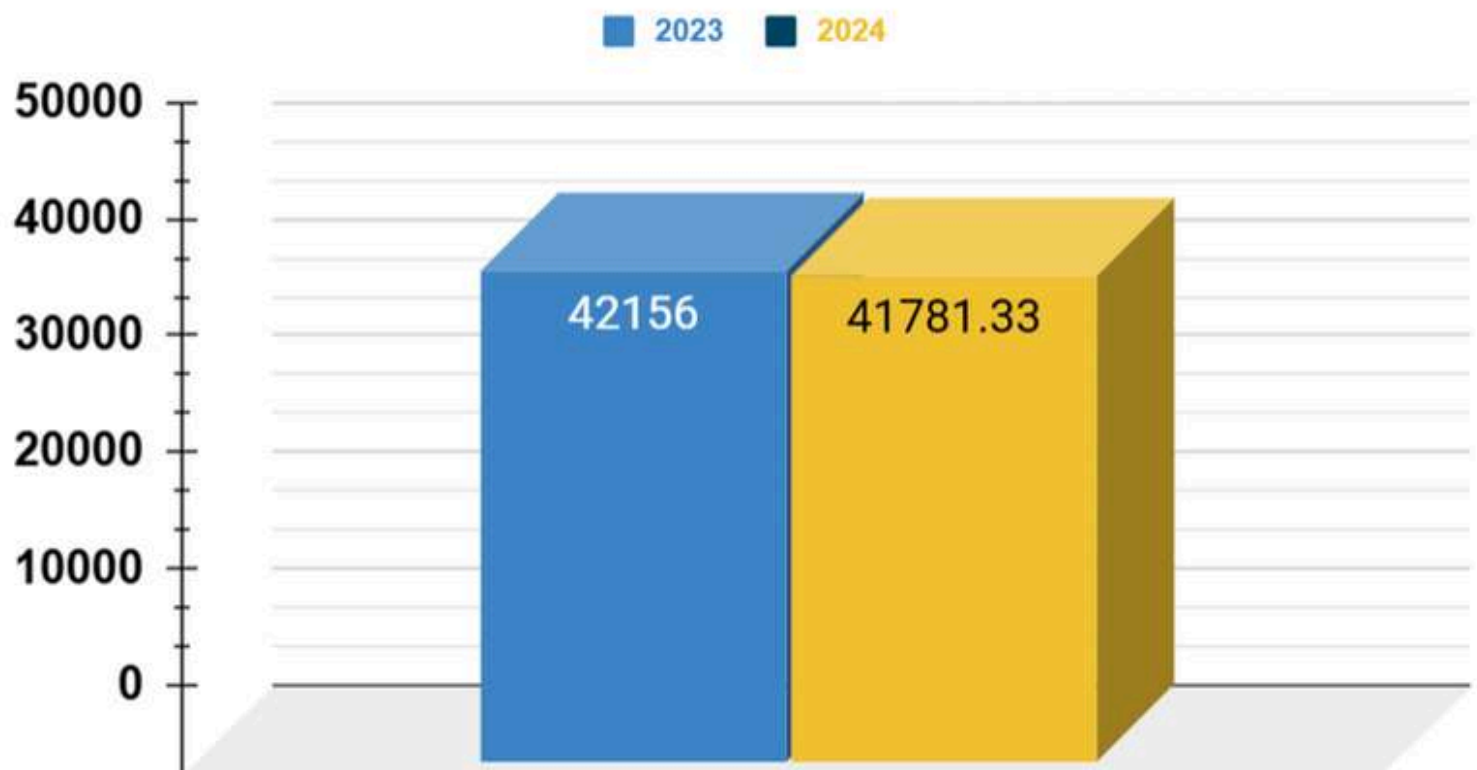
- Refillable toiletries are provided in the guest bathroom
- Replacement of LED lights in office areas
- Suspension of the use of one lift from Lobby to 4/F during non-peak hours

# ANNUAL WATER CONSUMPTION OVERVIEW



The Harbourview actively promotes environmental sustainability by integrating water-saving initiatives across all operational areas, including rooftop gardens, guest rooms, kitchens, and restrooms throughout the property. In 2024, the hotel's total water consumption reached 41,781.33 cubic meters, reflecting a reduction of 374.67 cubic meters (0.89%) compared to 2022 levels (42,156 cubic meters). This achievement demonstrates the effectiveness of our conservation measures, particularly noteworthy as it was accomplished amid full recovery in tourism industry demand.

## Annual Water Consumption Overview



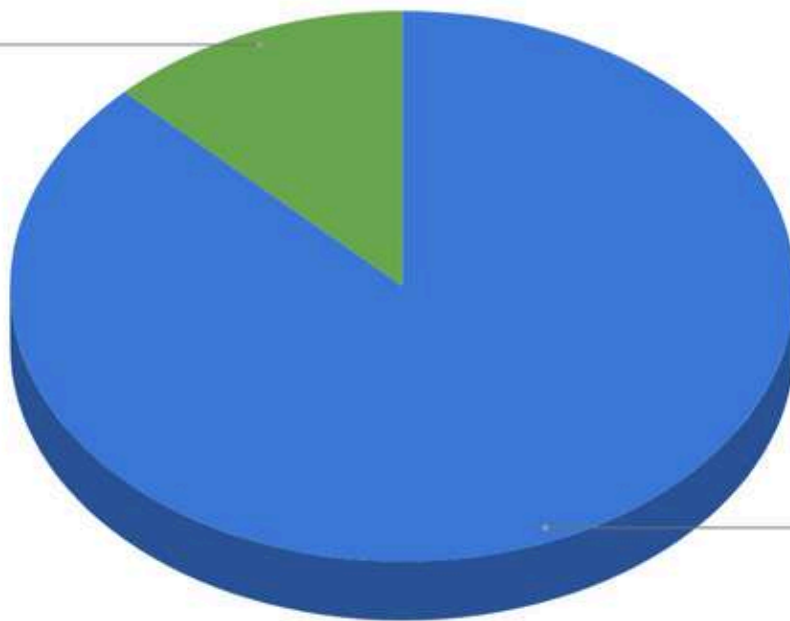
# WATER CONSUMPTION



The 2024 data reveals that public areas and guest rooms constitute the primary water consumption sources at our hotel, accounting for 36,546.15 cubic meters - representing 87.47% of the total water usage (41,781.33 cubic meters). In contrast, F&B operations consumed significantly less at 5,235.18 cubic meters, comprising merely 12.53% of the overall water footprint. This substantial disparity highlights the critical importance of implementing targeted water conservation measures in our room operations and public spaces to enhance sustainable resource management.

## 2024 Water Consumption Distribution Analysis

Food and Beverage  
12.5%



Public areas and guest rooms  
87.5%

# WATER CONSUMPTION - WATER SAVING FACILITIES



## Bathroom



Dual Flushing  
Cisterns



Water-saving  
Bathing Taps



Water-saving  
Water Taps

## Roof Top



Rainwater  
Collection  
System



Aquaponi  
cs device



Water-saving  
Dishwasher



# WASTE MANAGEMENT



Hong Kong's environmental challenges remain centered on solid waste management, with the 2023 Monitoring Report revealing staggering figures: 10,884 tonnes of daily waste (3,191 tonnes being food waste) and annual volumes exceeding 3.97 million tonnes. While the 33% municipal solid waste recovery rate - including 450,000 tonnes locally recycled - demonstrates progress, these statistics underscore the urgent need for systemic solutions.

In response, The Harbourview has fully implemented the 3R (Reduce-Reuse-Recycle) waste management framework, achieving remarkable 2024 results:



Food waste  
46963.5kg



Waste  
Paper  
916.5kg



Glass  
Bottle  
215.3kg



Metal  
67kg



Plastic  
9.82kg

# WASTE MANAGEMENT - REDUCTION

Committed to environmental stewardship, The Harbourview has implemented comprehensive waste reduction and management programs to minimize ecological impact and promote sustainable development:

1. The Harbourview has installed food waste digesters on its rooftop, transforming eggshells, coffee grounds, and other organic waste into nutrient-rich compost to support its on-site organic farm. This innovative system not only significantly reduces food waste but also creates a closed-loop resource cycle, effectively lowering overall waste emissions.
2. In alignment with Hong Kong's 2024 Product Environmental Responsibility (Amendment) Ordinance, the hotel The Harbourview has introduced multiple plastic recycling stations throughout the property to facilitate proper waste segregation by guests and staff. Further demonstrating its commitment to plastic reduction, the hotel has eliminated all disposable plastic amenity items, actively advancing its vision for a plastic-free hospitality environment.



# WASTE MANAGEMENT - REDUCTION



## 3. i-panels

The Harbourview uses energy-efficient digital e-panels in lobbies and public areas instead of printed posters. This cuts paper use and printing waste, enabling real-time updates of promotions and sustainability messages, blending tech innovation with eco-responsibility.



## 4. Eco-Friendly Umbrella Drying Stations:

The Harbourview has installed umbrella drying stations at the main entrances to cut plastic waste. These remove rainwater from umbrellas without disposable plastic covers, reducing single-use plastics while keeping guests convenient in bad weather—showcasing a commitment to practical eco-stewardship.



## 5. Sustainable Amenities Packaging Initiative:

The Harbourview uses biodegradable packaging and pump-dispenser bottles for guest amenities. This controls portions, cuts waste, boosts resource efficiency, and keeps guest comfort high—showcasing harmony between sustainability and hospitality excellence.



# WASTE MANAGEMENT - REUSE AND RECYCLE



The Harbourview is committed not only to reducing waste generation but also actively participates in various waste recycling and circular economy initiatives. By collaborating with diverse partners, including government agencies, non-governmental organizations, and private enterprises, we are able to drive broader environmental actions and amplify our positive impact on the environment.



**The Mooncake Box Recycling Drive 2024**



**Earth Hour 2024 observance**



**The Red Packet Reuse and Recycling Program 2024**



A large indoor vertical garden wall is the central focus, covered in dense green foliage with small pink flowers. To the right, a glass wall reflects the interior, and a digital display is visible. The scene is brightly lit, suggesting a modern, eco-friendly interior space.

# ENVIRONMENTAL AWARENESS

---

## Staff engagement



- **Field Visit**

The Harbourview continues to advance environmental education through hands-on experiences. In collaboration with the "Woodland" garden waste recycling center in Tuen Mun, the hotel organized a staff visit, during which employees witnessed firsthand how organic waste is professionally processed into valuable resources, including compost, recycled furniture, and eco-friendly decor. This immersive experience brought the "waste-to-resource" circular economy concept to life, significantly enhancing the team's understanding of material recovery while deepening their awareness of waste and carbon reduction. The initiative demonstrates the hotel's concrete commitment to driving sustainable development.

- **Training and Education**

To continuously enhance employees' environmental awareness, The Harbourview has implemented multi-faceted environmental education initiatives. A dedicated sustainability bulletin board is set up in the staff cafeteria, regularly updated with global environmental topics and the company's green initiatives. Through environmental briefings, case studies and data analysis, the hotel shares cutting-edge sustainable development knowledge and practical techniques to elevate staff's ecological literacy.

# Guests Engagement



The Harbourview upholds eco-friendly principles by integrating sustainability into daily operations, delivering high-quality hospitality services while minimizing environmental impact. Located in the heart of Wan Chai, the hotel is steps away from cultural landmarks like the Golden Bauhinia Square, Blue House, and Tamar Park, encouraging guests to explore on foot—reducing carbon emissions while immersing in Hong Kong's urban culture.

In alignment with the Product Eco-responsibility (Amendment) Ordinance effective 22 April 2024, we have eliminated complimentary disposable plastic toiletries and bottled water in guest rooms, advocating a "plastic-free" ethos by encouraging guests to bring personal items. Rooms feature energy-saving systems (e.g., dual-flush toilets, low-flow showers) to enhance resource efficiency under our energy and water conservation policies. We further promote sustainable tourism by fostering guest participation in eco-practices, such as carrying reusable toiletries, to cultivate global awareness.

Additionally, the hotel has installed plastic bottle recycling stations and introduced in-house umbrella drying devices to reduce single-use plastic cover waste. Future initiatives include food waste bio-decomposition programs and biodegradable packaging to advance circular economy goals.



# Guests Engagement



Additionally, the hotel has designed an environmental awareness questionnaire to understand customers' awareness and practices regarding environmental issues. It covers daily eco-friendly habits (such as resource recycling, energy conservation, and plastic reduction), acceptance of the hotel's green measures (such as environmentally friendly amenities and energy management), and suggestions for improvement. The questionnaire is anonymous, and the results will be used to optimize the hotel's sustainability policies and enhance the quality of environmental services. Customers' valuable opinions will help us create a more eco-friendly accommodation experience.



## 2024 顧客環保意識問卷調查

### 2024 Survey Questionnaire for Environmental Awareness and Environmental Related Behavior of Guest

請以數分鐘時間填寫以下關於環保意識的問卷,歡迎您留下任何意見。您所填寫的答案將會完全保密,謝謝您的參與。Please take a few minutes to fill in this survey on guest's environmental awareness and our eco-friendly practices. Please feel free to leave your feedback and your answers will be kept confidential. Thank you for your participation.



# ENVIRONMENT AND SOCIAL RESPONSIBILITY



## Partnership

The Harbourview has long been committed to sustainable development and environmental responsibility. Since 2015, we have established a collaborative partnership with The Education University of Hong Kong, with special gratitude to Dr. Cheung On Ting from the Department of Social Sciences and Policy Studies, and Dr. Fok Nin Hang and Dr. Chow Sin Yin from the Department of Science and Environmental Studies for their professional support. Through this partnership, we have gained access to cutting-edge knowledge and technologies in environmental management, allowing us to integrate academic research findings into our hotel operations. The three professors have provided invaluable insights and practical recommendations from their respective fields of expertise, enabling us to continuously refine and enhance our environmental initiatives.

This unique collaboration between academia and industry has empowered The Harbourview to elevate our environmental management standards and achieve tangible progress in energy conservation, carbon reduction, and resource recycling. We look forward to sustaining this mutually beneficial partnership and jointly developing even more effective environmental solutions in the future.

# PARTNERSHIP - INTERNSHIP

The summer internship program jointly launched by The Harbourview and The Education University of Hong Kong welcomed outstanding interns from the Integrated Environmental Management course in 2024. These interns applied their classroom-acquired professional knowledge and skills to various aspects of the hotel's environmental management practices, injecting new momentum into our sustainability efforts.

During the internship, the interns completed two significant environmental reports: the "Green Development Report" and the "Carbon Audit Report." The "Green Development Report" systematically compiled the hotel's achievements in energy and water conservation, waste management, and other areas, while also identifying fields requiring improvement. The "Carbon Audit Report" provided an in-depth analysis of carbon emission hotspots in hotel operations, clearly outlining the gap between current progress and future carbon reduction targets, thereby informing our next-phase emission reduction strategies.

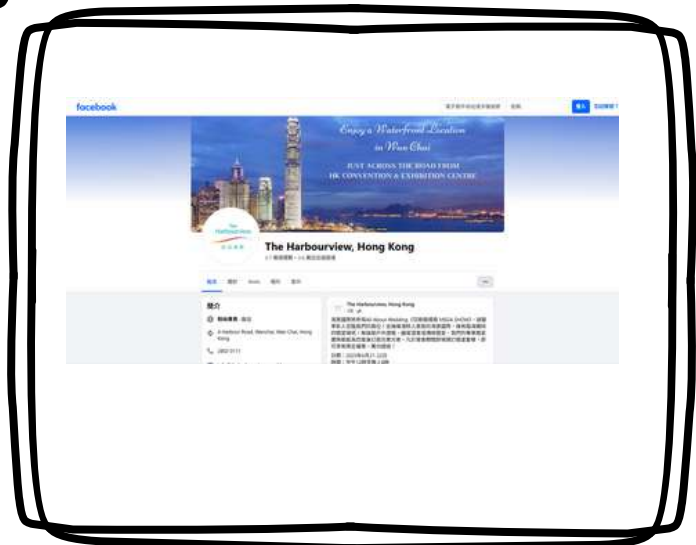
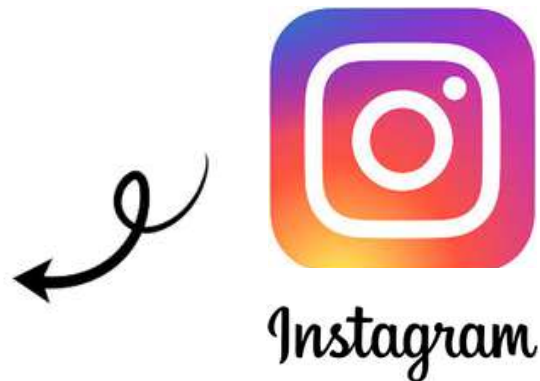
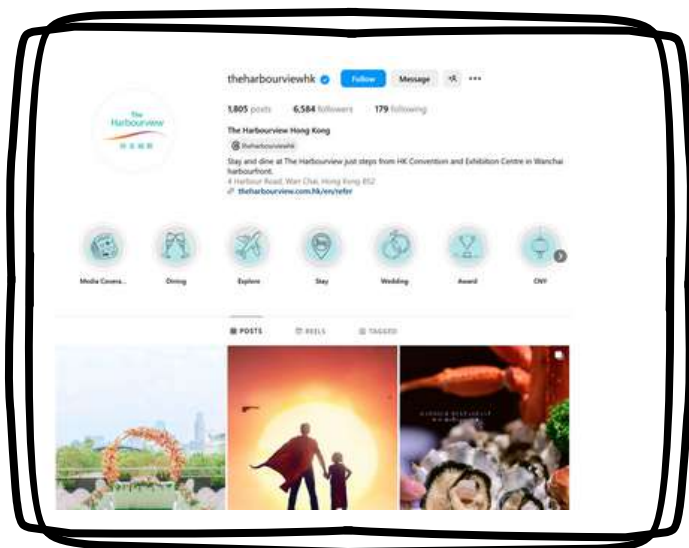
To comprehensively evaluate the effectiveness of our environmental policies, the interns conducted an environmental awareness survey targeting both staff and guests. Through questionnaires and in-depth interviews, they quantitatively analyzed the acceptance and impact of current sustainability measures and identified areas for enhancement. These valuable insights will serve as critical references for The Harbourview to refine its environmental policies.

The interns' contributions extended beyond report writing and survey analysis. They also organized a series of environmental awareness initiatives, including workshops for staff, lectures on sustainability topics, and updates to the environmental information bulletin board in the staff dining area—all aimed at fostering greater ecological consciousness among employees.

# DISSEMINATION OF ENVIRONMENTAL INFORMATION



As a socially responsible enterprise, The Harbourview actively utilizes social media platforms such as Facebook and Instagram to systematically share our latest advancements in environmental protection. Through regularly updated posts, we not only showcase the various eco-friendly initiatives implemented by the hotel and the green certifications we have obtained, but also strive to encourage the public to adopt environmentally conscious lifestyle habits and participate in community-organized sustainability activities.





# ENVIRONMENTAL CHARTERS, CERTIFICATION AND AWARDS

## 1. Bank of China Hong Kong Corporate Environmental Leadership Awards 2023 - Outstanding Environmental Partner, 3+ Year Environmental Pioneer Badge

The Harbourview has been honored with the "Outstanding Environmental Partner" award and "3+ Year Environmental Pioneer Badge" at the Bank of China Hong Kong Corporate Environmental Leadership Awards 2023.



## 2. Hong Kong Environmental Excellence Awards 2023 - Merit Award - Hotel & Leisure Club Category

The Harbourview has been honored with the "Merit Award in the Hotel & Leisure Club Category" at the Hong Kong Environmental Excellence Awards 2023 in recognition of our outstanding environmental performance.

## 3. Indoor Air Quality (IAQ) Certification - Excellent Class [G/F, M/F, 1/F & 2/F (Excluding Back-of-House and Service Areas)]

The Harbourview has been awarded the "Indoor Air Quality (IAQ) Certification Excellent Class" by the Hong Kong Environmental Protection Department (HKEPD), recognizing our stringent air quality management measures and commitment to maintaining a healthy, comfortable indoor environment.



# ENVIRONMENTAL CHARTERS, CERTIFICATION AND AWARDS



## 4. Carbon Neutrality (Waste Reduction) Charter

The Harbourview has signed the Carbon Neutrality (Waste Reduction) Charter, a key step in its commitment to sustainable development and waste management. The initiative aims to achieve operational carbon neutrality progressively via systematic waste reduction and circular resource strategies.

## 5. Outdoor Lighting Charter

We take pride in this recognition for our commitment to reducing light pollution and conserving energy. Through intelligent lighting controls and responsible illumination practices, we help preserve Hong Kong's nighttime environment and promote sustainable urban development.



## 6. "ESG+ Charter Initiative 2023"

The Harbourview has signed this charter, committed to integrating ESG principles into our operations. It accelerates green transformation via climate action, social inclusion, and governance excellence.

As a signatory, we'll pioneer innovations, collaborate to set hospitality ESG benchmarks, and balance environmental stewardship, social responsibility, and transparent governance—reinforcing our role in responsible hospitality while maintaining top service.



# ENVIRONMENTAL CHARTERS, CERTIFICATION AND AWARDS



## 7. Green Office & Healthy Workplace Award Scheme - Green Office Label & Healthy Workplace Label

The Harbourview has earned dual Green Office & Healthy Workplace certifications for its eco-conscious operations and employee-focused environment. This achievement recognizes our energy efficiency, waste reduction, and air quality initiatives, setting new hospitality industry standards in sustainable workplaces.



## 8. Energy Efficiency Certification

The hotel has been recognized for its excellence in energy management, successfully reducing consumption and carbon emissions through system upgrades, equipment optimization, and staff training programs. This achievement reinforces our leadership in sustainable hospitality and sets new benchmarks for Hong Kong's hotel industry.

## 9. Waste Reduction Certification

Recognized for excellence in waste management, the hotel has cut operational waste through strategies like enhanced sorting, food waste recycling, and sustainable alternatives. This achievement highlights our leadership in sustainability and sets a new standard for eco-friendly hospitality. By minimizing waste and maximizing resources, we reinforce our commitment to a greener future.





# FUTURE PROSPECTS

The Harbourview is committed to environmental protection and sustainable development, actively addressing the challenges of global climate change and local environmental regulations. In 2024, we will continue to implement innovative eco-friendly measures, reduce carbon emissions and plastic usage, enhance energy and resource efficiency, and promote smart management systems to lay a solid foundation for achieving carbon neutrality.

## 2025 Outlook

- 01 Optimize Energy Usage: Introduce more renewable energy technologies to further reduce our carbon footprint.
- 02 Expand Plastic Reduction & Recycling: Explore sustainable alternatives to minimize plastic and waste generation.
- 03 Enhance Smart Environmental Monitoring: Implement precision management for energy and water resources.
- 04 Strengthen Environmental Education: Foster green habits among staff and guests through awareness initiatives.
- 05 Support Government & Global ESG Initiatives: Improve our performance in Environmental, Social, and Corporate Governance (ESG) in alignment with Hong Kong and international standards.

The Harbourview will remain dedicated to environmental stewardship, integrating sustainable practices into daily operations and collaborating with stakeholders to build a greener, more sustainable future for Hong Kong.

# ACKNOWLEDGMENTS

Since 2015, The Harbourview has maintained a close partnership with The Education University of Hong Kong. We would like to express our special gratitude to Dr. Cheung On Ting from the Department of Social Sciences and Policy Studies, Dr. Fok Nin Hang from the Department of Science and Environmental Studies, and Dr. Chow Sin Yin from the Department of Social Sciences for their invaluable expertise and support in formulating and optimizing our environmental strategies. Their guidance has played a crucial role in advancing our sustainability initiatives and reducing environmental impact. We also extend our heartfelt thanks to all departments and staff members who contributed to promoting eco-friendly practices and a sustainable environment in 2024. It is through your collective efforts that The Harbourview continues to achieve its environmental goals and drive green operations.

Furthermore, we appreciate the support and collaboration of our partners, government agencies, and non-governmental organizations (NGOs), enabling us to actively participate in various environmental projects and community initiatives.

Your feedback is highly valuable to us. We welcome suggestions from guests and the wider community to help The Harbourview further enhance its environmental measures. Together, let's create a greener and more sustainable future.

# REFERENCE

Electrical and Mechanical Services Department, & Environmental Protection Department. (2021). Energy Utilization Index - Commercial Sector.  
<https://ecib.emsd.gov.hk/index.php/en/energy-utilisation-index-en/commercial-sector-en>

Electrical and Mechanical Services Department, & Environmental Protection Department. (2010). Guidelines to Account for and Report on Greenhouse Gas Emissions and Removals for Buildings (Commercial, Residential or Institutional Purposes) in Hong Kong - 2010 Edition.  
[https://www.climate-ready.gov.hk/files/pdf/Guidelines\\_English\\_2010.pdf](https://www.climate-ready.gov.hk/files/pdf/Guidelines_English_2010.pdf)

Environmental Bureau, Development Bureau, & Transport and Housing Bureau. (2015). Energy Saving Plan for Hong Kong's Built Environment 2015-2025+. The Government of HKSAR.  
<https://www.enb.gov.hk/sites/default/files/pdf/EnergySavingPlanEn.pdf>

Environment Bureau, & Electrical and Mechanical Services Department. (2023). About Energy Saving Charter & 4T Charter Schemes.  
<https://www.energysaving.gov.hk/esc2021/en/charter/index.html>

Environmental Protection Department. (2024). Monitoring of Solid Waste in Hong Kong Waste Statistics for 2024.  
[https://www.wastereduction.gov.hk/sites/default/files/resources\\_centre/waste\\_statistics/msw2024\\_eng.pdf](https://www.wastereduction.gov.hk/sites/default/files/resources_centre/waste_statistics/msw2024_eng.pdf)